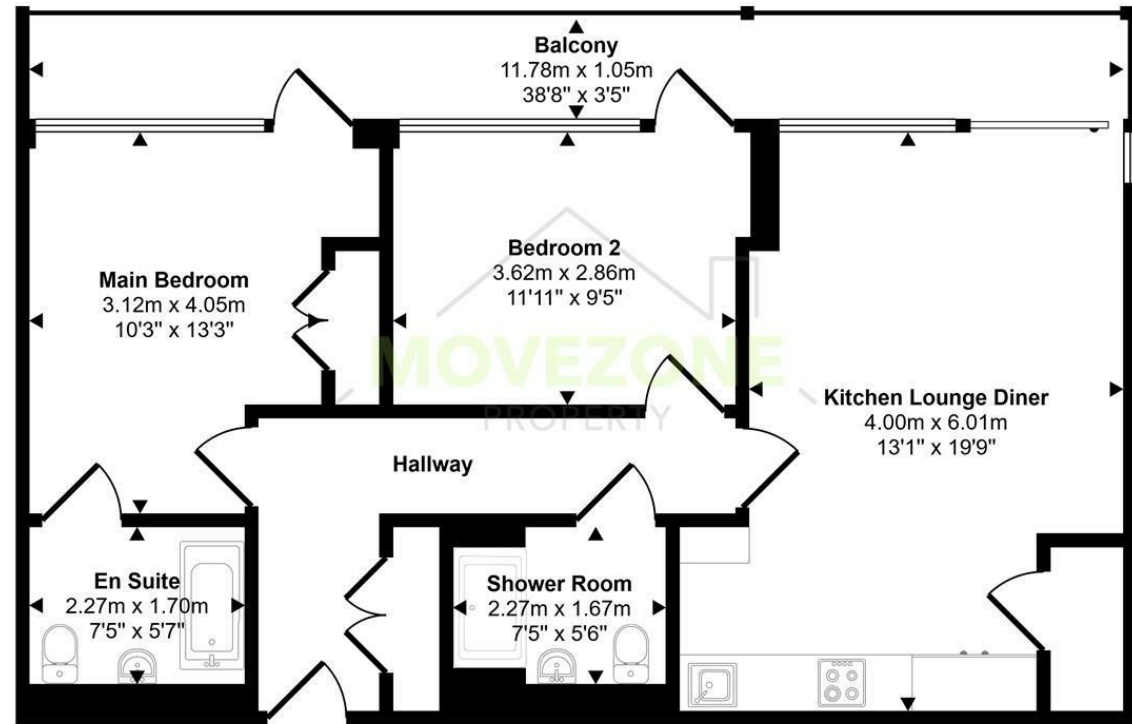


Approx Gross Internal Area
72 sq m / 772 sq ft



Floorplan

This floorplan is only for illustrative purposes and is not to scale. Measurements of rooms, doors, windows, and any items are approximate and no responsibility is taken for any error, omission or mis-statement. Icons of items such as bathroom suites are representations only and may not look like the real items. Made with Made Snappy 360.

Directions

Contact

223 Southborough Lane
Bromley
Kent
BR2 8AT

E: info@movezone.co.uk

T: 0208 3139075

<https://www.movezone.co.uk>



2 Bed
Flat
located in Highbury Stadium
Square



68 Southstand Apartments Highbury Stadium Square

£2,950 PCM



An amazing opportunity to rent this stunning two bedroom, two bathroom part-furnished apartment set within the highly sought after Highbury Stadium Square development, the former home of Arsenal F.C.. Offering concierge service, beautifully maintained communal gardens and a fantastic location, this property is sure to let to the first person who views.

The property comprises two double bedrooms, one with en-suite, a family bathroom, and a spacious open plan lounge with a fully fitted kitchen complete with appliances. Further benefits include wood flooring throughout and a large private balcony accessible from the lounge and both bedrooms, overlooking the beautifully maintained communal gardens.

Ideally located in the heart of Highbury, the property is within easy reach of the vibrant amenities of Upper Street, with excellent transport links via Arsenal and Highbury & Islington stations, providing quick access into the City and West End.

Contingency deposit is £3403.84
EPC Rating: B
Council Tax Band: E

Don't miss the opportunity to call this beautiful flat your new home!

